

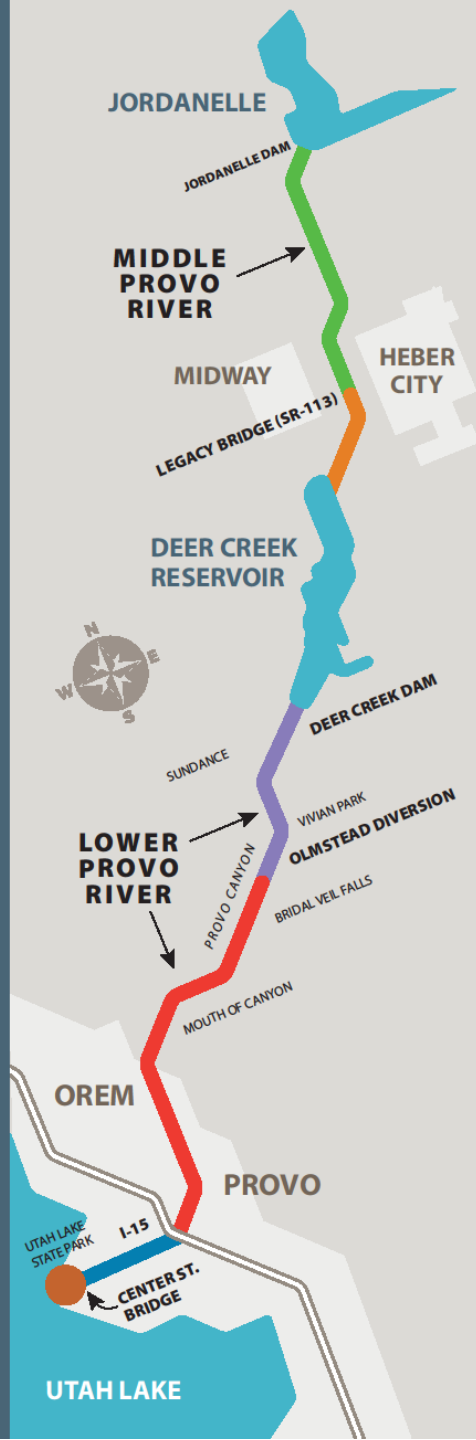


MIDDLE PROVO RIVER

OBJECTIVE

- Address questions and public comments from 2018 Wildlife Board meeting
 - Concerns and perception of a “stunted/unhealthy” trout population in the MPR
 - Present results from 2019 MPR fish population surveys
 - Survey the angling public about their MPR fishing experience
 - Present results from 2019 MPR creel survey

MIDDLE & LOWER PROVO RIVERS



Middle Provo River

Jordanelle Dam to Legacy Bridge on Midway Ln. (SR-113):

- Limit 2 trout under 15 inches
- Artificial flies, lures only

Legacy Bridge on Midway Ln. (WR-113) to Deer Creek Res.:

- General fishing rules apply (Bait allowed, general fish limits, no fish size restrictions, etc.)

Lower Provo River

Deer Creek Dam to Olmstead Diversion:

- Limit 2 trout under 15 inches
- Artificial flies, lures only

Olmstead Diversion to Center St. Bridge (Utah Lake State Park):

- General fishing rules apply (Bait allowed, general fish limits, no fish size restrictions, etc.)

I-15 to Center St. Bridge (Utah Lake State Park):

- Immediately release all suckers
- Closed March 1 through 6 a.m. on first Sat. in May.

See current *Utah Fishing Guidebook* for all details.

To promote larger fish, we encourage anglers to harvest a limit of trout.



UTAH DIVISION OF
WILDLIFE RESOURCES

MIDDLE PROVO RIVER

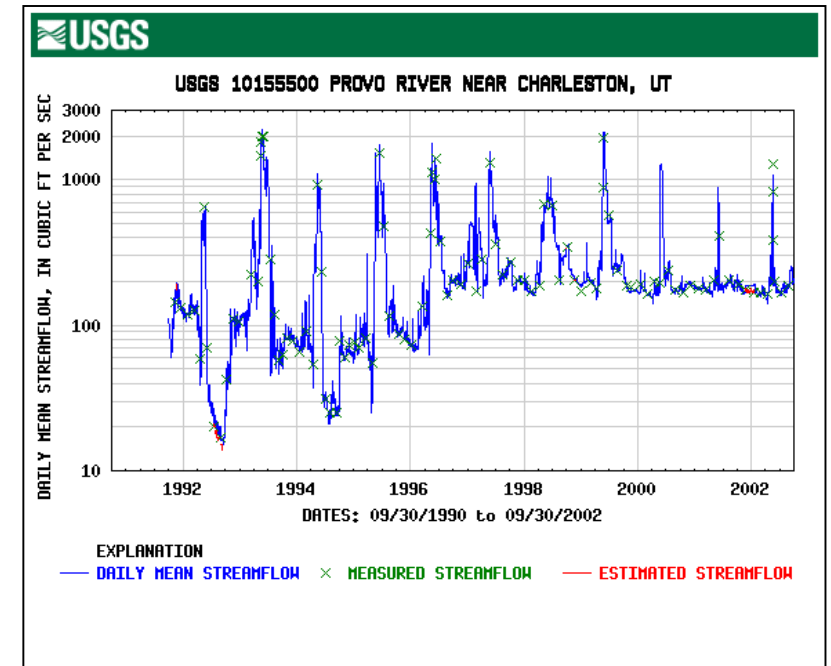
Pre-1997

Low flows limited food production and habitat severely restricted



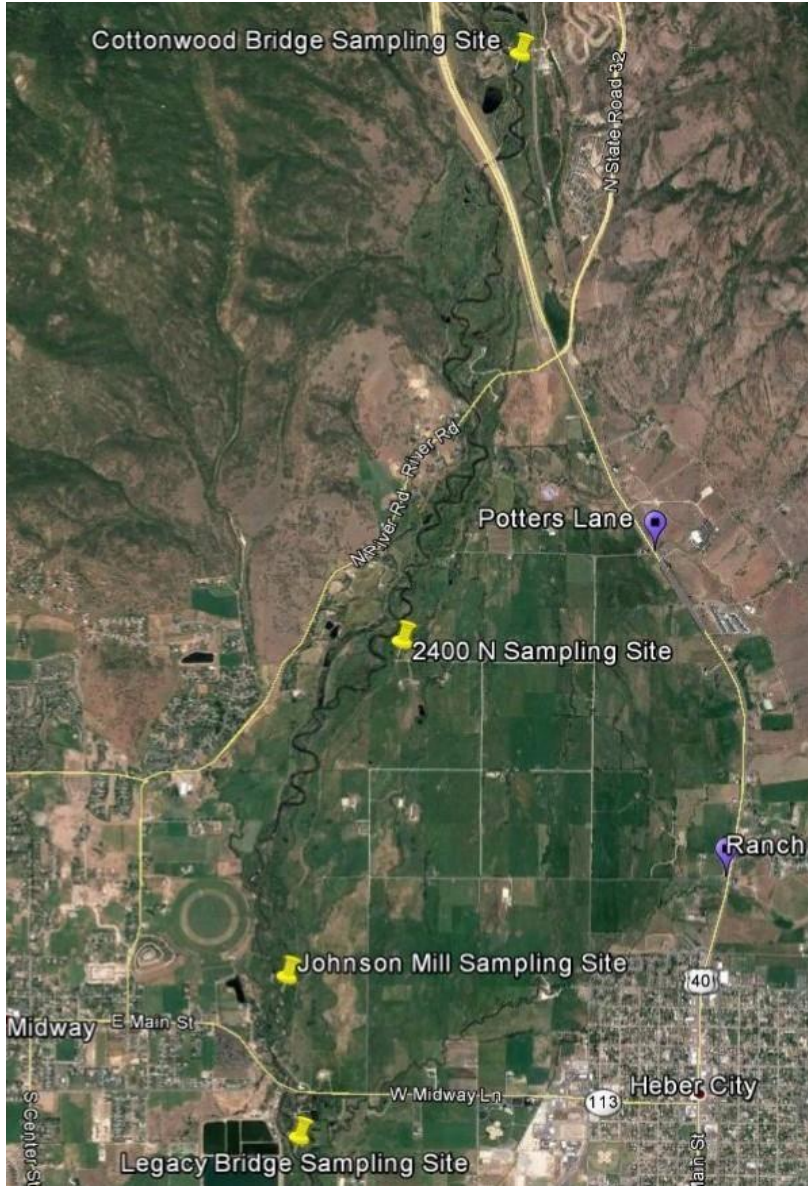
Post-1997

Minimum flows (125 cfs) improved food production and habitat



1. Decreased Mortality
2. Increased Recruitment
3. Increased Productivity and Competition

POPULATION MONITORING: OCT 2019

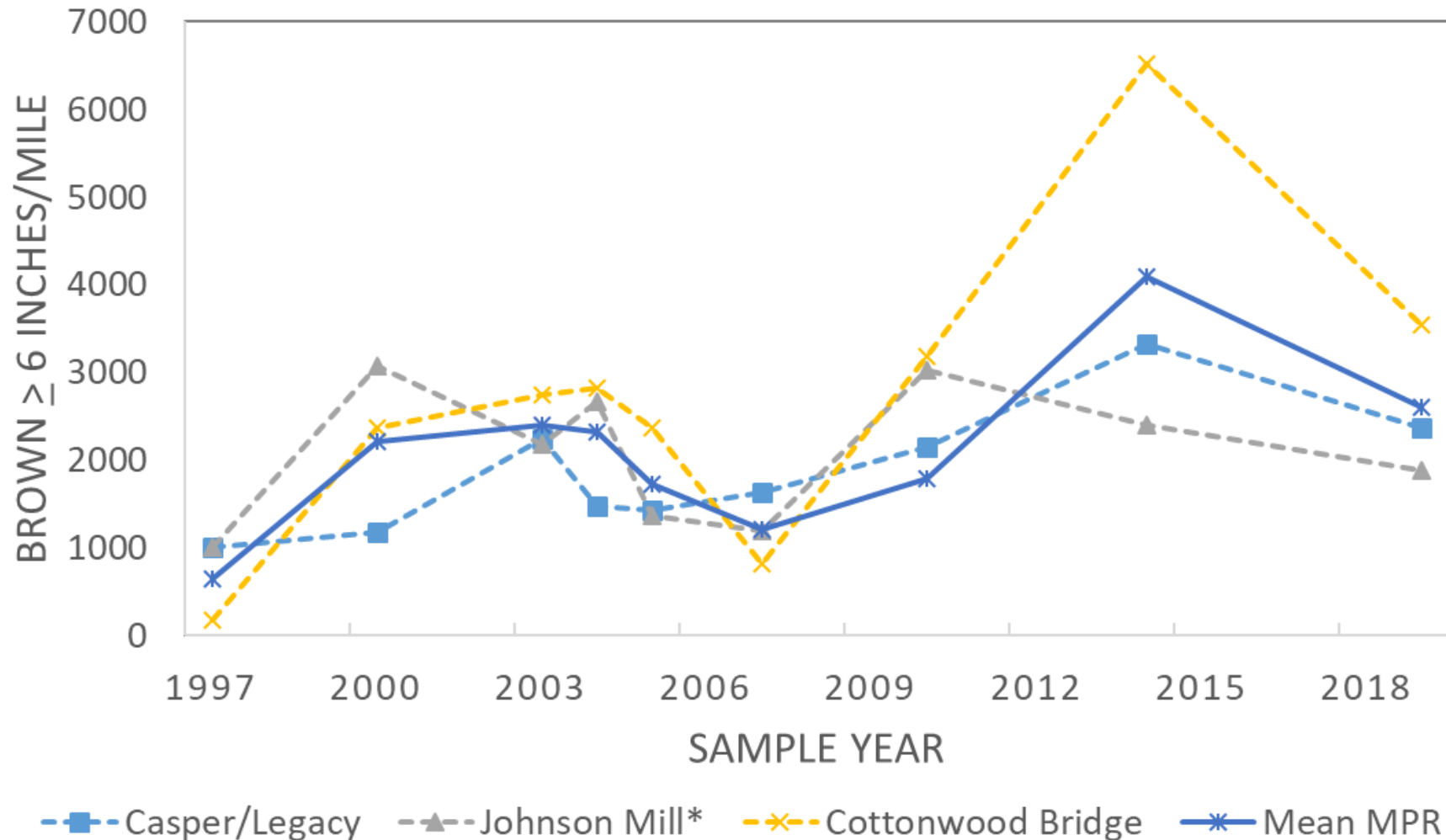


- Sampling Sites
- Jim O'Neal & Fly Fish Food YouTube videos posted Oct 29, 2019



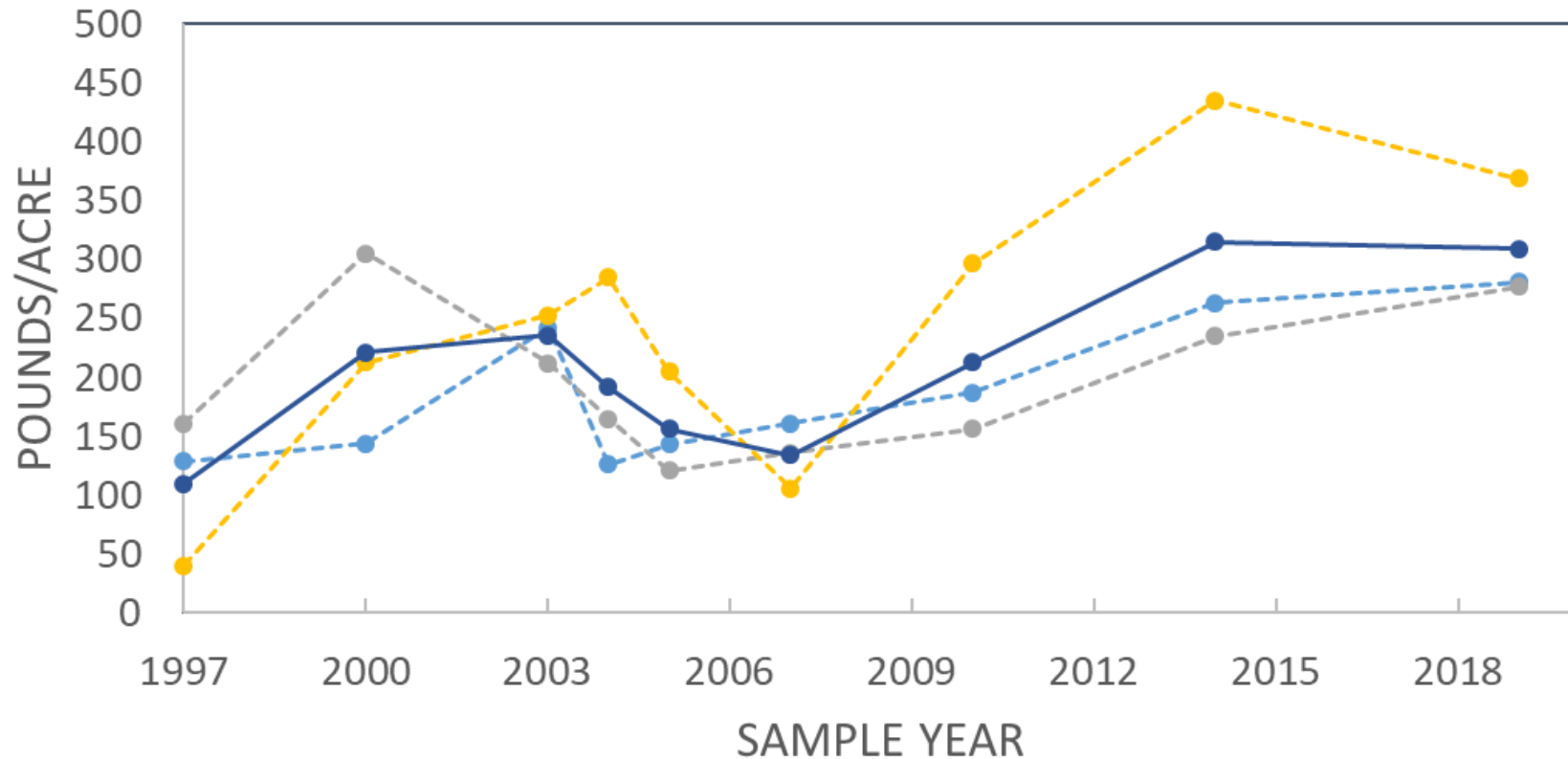
BROWN TROUT POPULATION ESTIMATES

MPR BROWN TROUT POPULATION SUMMARY 1997-2019



BROWN TROUT BIOMASS ESTIMATES

MPR BROWN TROUT BIOMASS SUMMARY 1997-2019 (BRN \geq 6 INCHES)

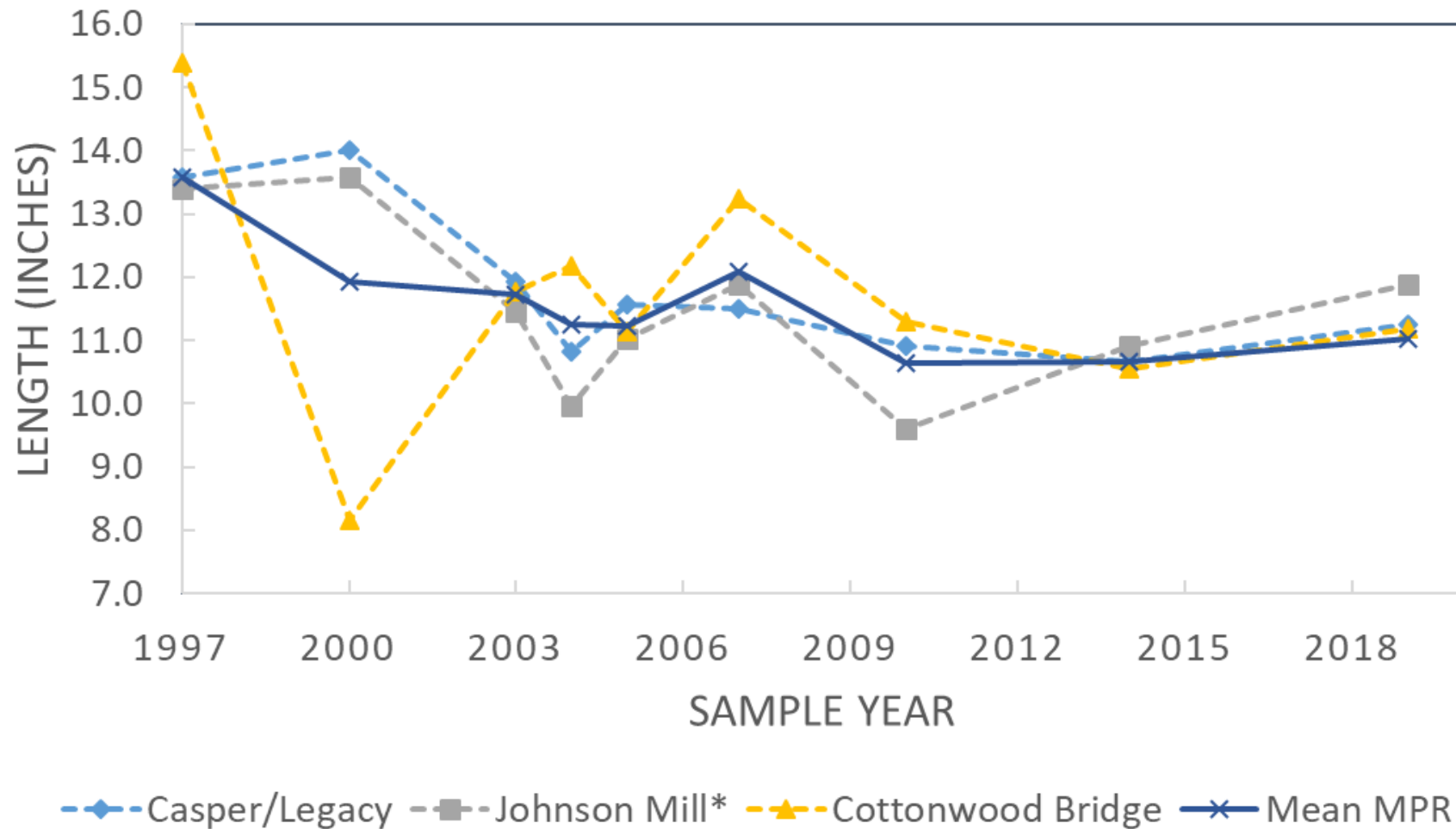


- ~1,800lbs/mile on Middle Provo
- Wyoming Blue Ribbon classification = 600lbs/mile

---●--- Casper/Legacy ---●--- Johnson Mill* ---●--- Cottonwood Bridge ---●--- Mean MPR

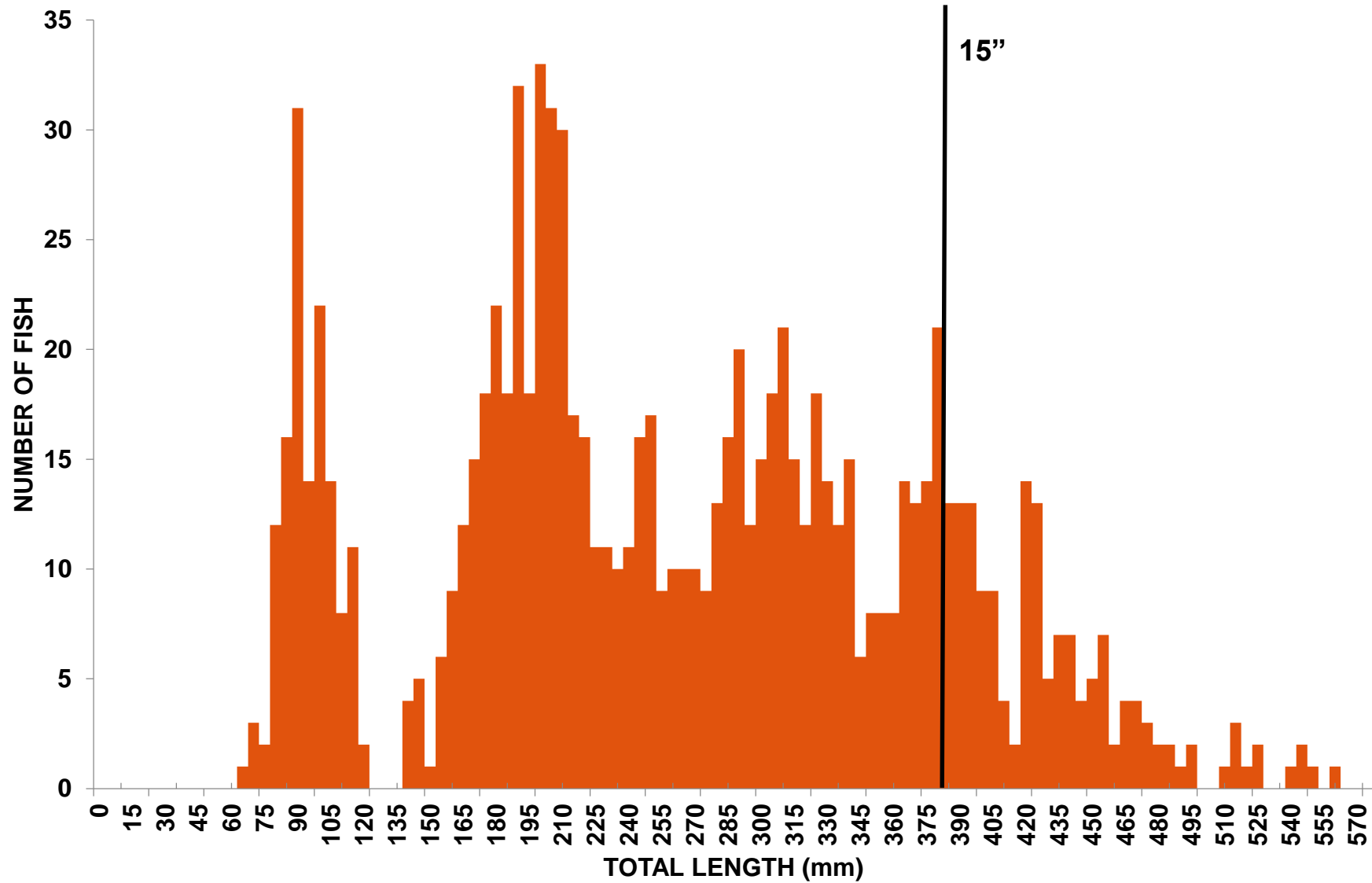
BROWN TROUT TOTAL LENGTH

MPR BROWN TROUT LENGTH SUMMARY 1997-2019 (BRN \geq 6 INCHES)



BROWN TROUT TOTAL LENGTH

SIZE DISTRIBUTION OF BROWN TROUT SAMPLED IN MIDDLE PROVO RIVER

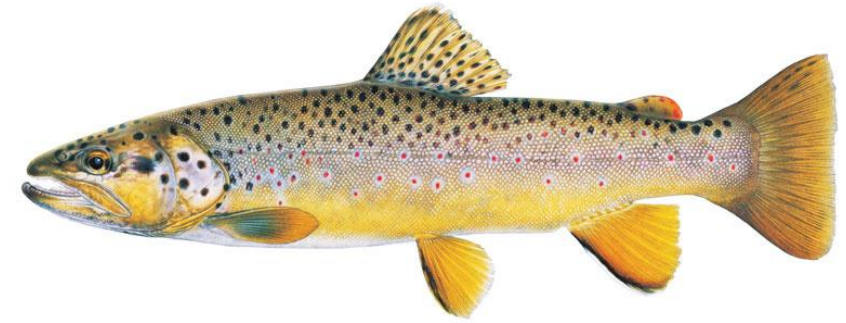


PROPORTIONAL SIZE DISTRIBUTION (PSD)

$$\text{PSD-}X = \frac{\text{Number of fish} \geq \text{specified length}}{\text{Number of fish} \geq \text{minimum stock length}} * 100$$

- X indicates length categories (species specific)
 - Based on percentages of World Record Catch
 - S= Stock (“catchable”)
 - Q= Quality
 - P= Preferred
 - M= Memorable
 - T= Trophy
- Proportional size distributions are percentages of fish a certain size or larger
 - Example: PSD-Q = 60 means 60% of the fish are quality size or larger

BROWN TROUT PSD

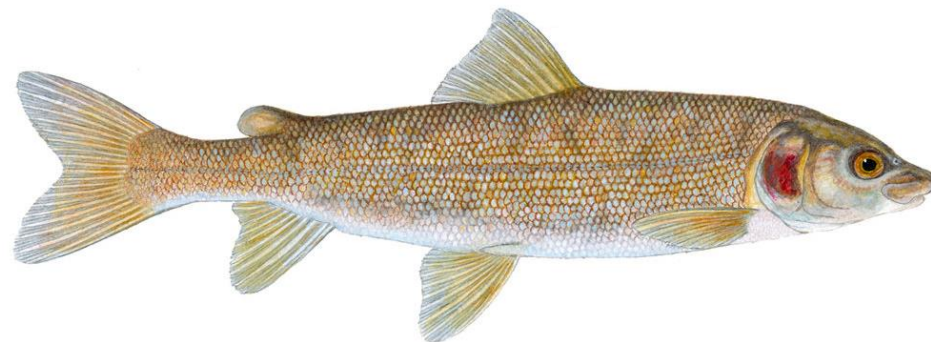


	PSD-Q	PSD-P	PSD-M	PSD-T
	Quality	Preferred	Memorable	Trophy
	≥230mm	≥300mm	≥380mm	≥460mm
Sample Year	≥9 in	≥12 in	≥15 in	≥18 in
2014	65	35	9	1
2019	65	44	20	3
PSD-X equals percent of catchable sized fish over a certain size (i.e. percent of 150mm Brown trout over a certain size)				

- Idaho define Trophy waters as PSD-M ≥ 5 and PSD-T ≥ 2
- Generally PSD-Q ≥ 60 indicates a population in balance with prey source or “healthy” population

MOUNTAIN WHITEFISH PSD

	PSD-Q	PSD-P	PSD-M	PSD-T
	Quality	Preferred	Memorable	Trophy
	≥185mm	≥241mm	≥297mm	≥372mm
Sample Year	≥7.3in	≥9.5 in	≥11.7 in	≥14.6 in
2014	37	36	35	19
2019	77	77	74	34



TROPHY SPORTFISH

- Brown Trout ≥ 18 " and Mountain Whitefish ≥ 14.6 "
- Legacy Bridge Site
 - 22 trophy fish/reach or ~186 trophy fish/mile
- 2400 N. Site
 - 36 trophy fish/reach or ~317 trophy fish/mile
- Cottonwood Bridge Site
 - 27 trophy fish/reach or ~204 trophy fish/mile



CONDITION: RELATIVE WEIGHT

- Species specific standard weight equations
- Values well below 100 = issues with food or forage
- Values well above 100 = surplus prey items
- **W_r value (90-100)** indicates a “healthy” condition and implies balance between predator/prey for an individual or population
- **$W_r \leq 85$** implies limited forage or other limitations to growth



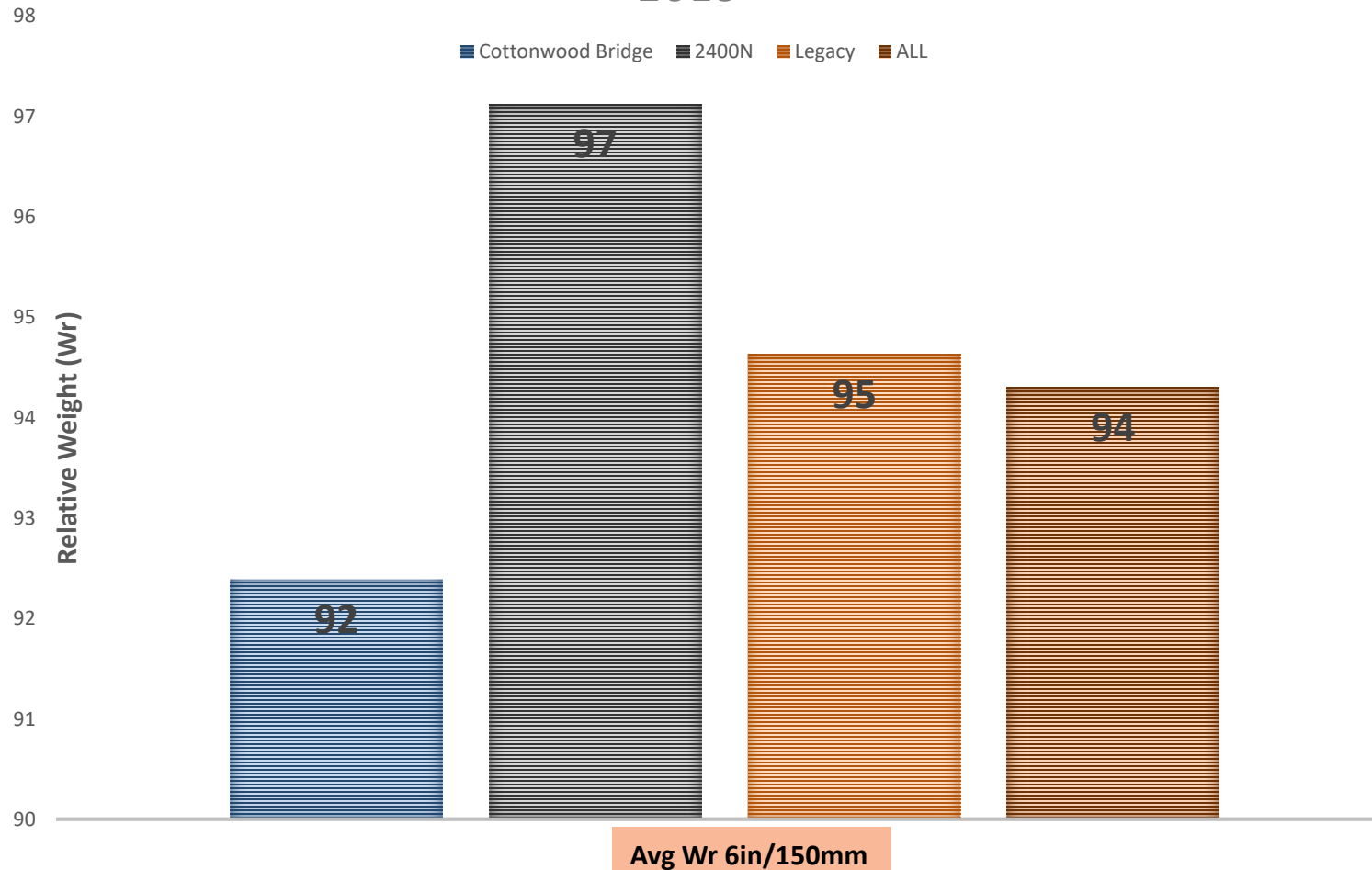
**Low Relative Weight
Under 85
“skinny, snakey”**

**High Relative Weight
+102
“fatty, footballs”**



CONDITION: RELATIVE WEIGHT

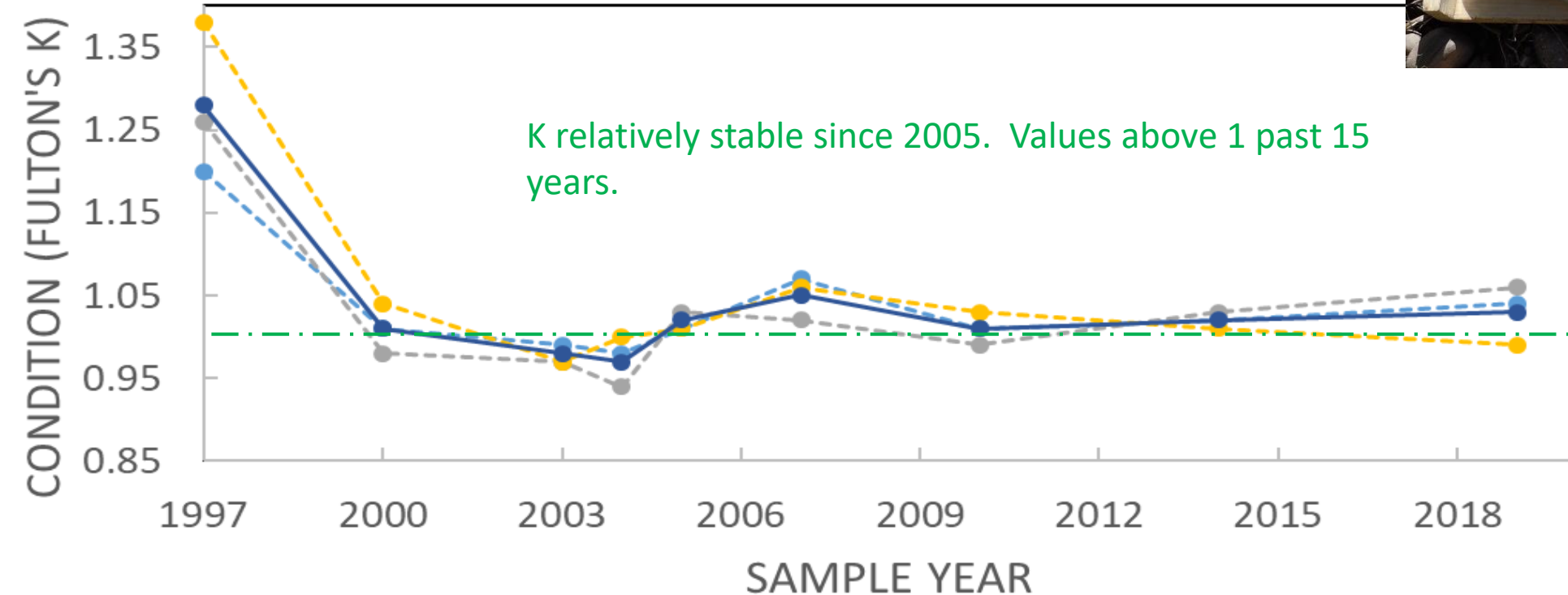
MIDDLE PROVO RELATIVE WEIGHT BROWN TROUT 2019



- All values above 90 – healthy Brown Trout population

CONDITION: FULTON'S KTL

MPR BROWN TROUT CONDITION (KTL) SUMMARY 1997-2019 (BRN \geq 6 INCHES)

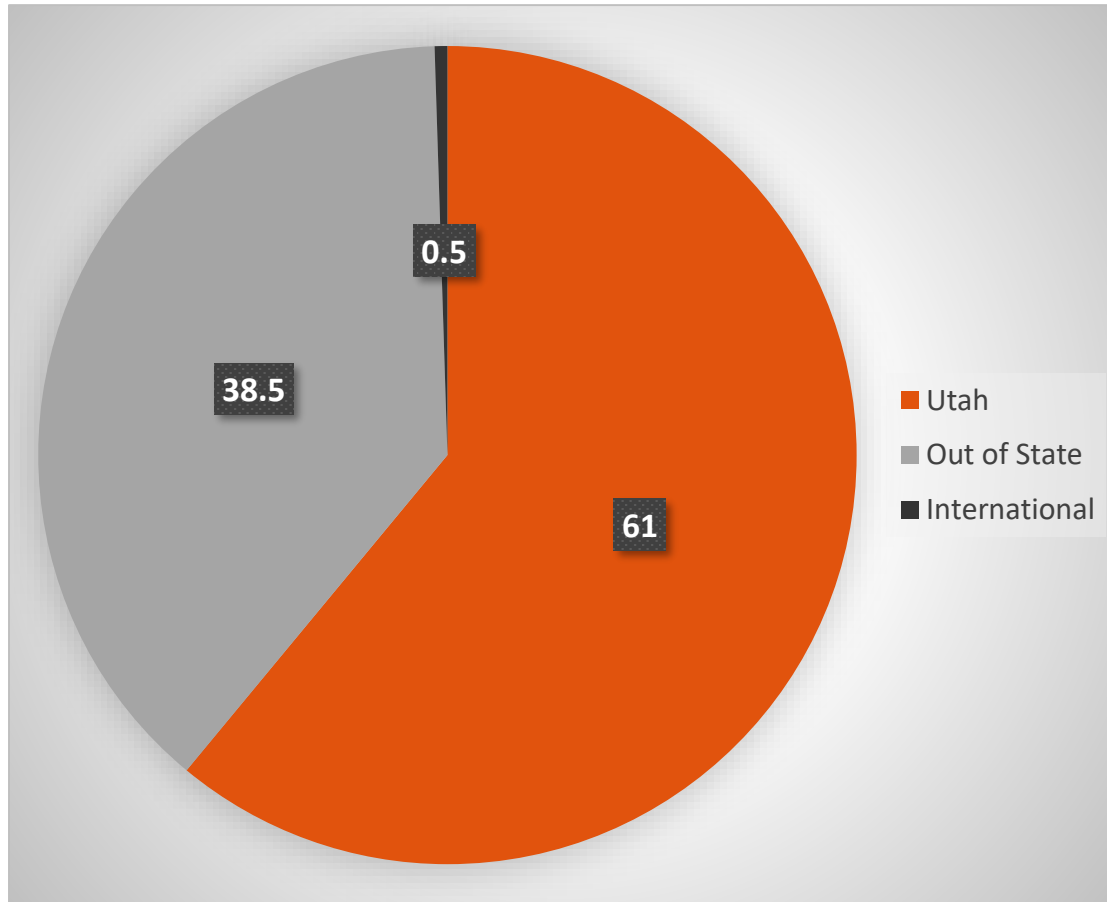


---●--- Casper/Legacy ---●--- Johnson Mill* ---●--- Cottonwood Bridge ---●--- Mean MPR

OBJECTIVES

- Address questions and public comments from 2018 Wildlife Board meeting
 - Concerns and perception of a “stunted/unhealthy” trout population in the MPR
 - Present results from 2019 MPR fish population surveys
 - Present result from 2019 MPR creel survey
 - Survey the angling public about their MPR fishing experience
 - Present results from 2019 MPR creel survey

ANGLER DEMOGRAPHICS: RESIDENCY

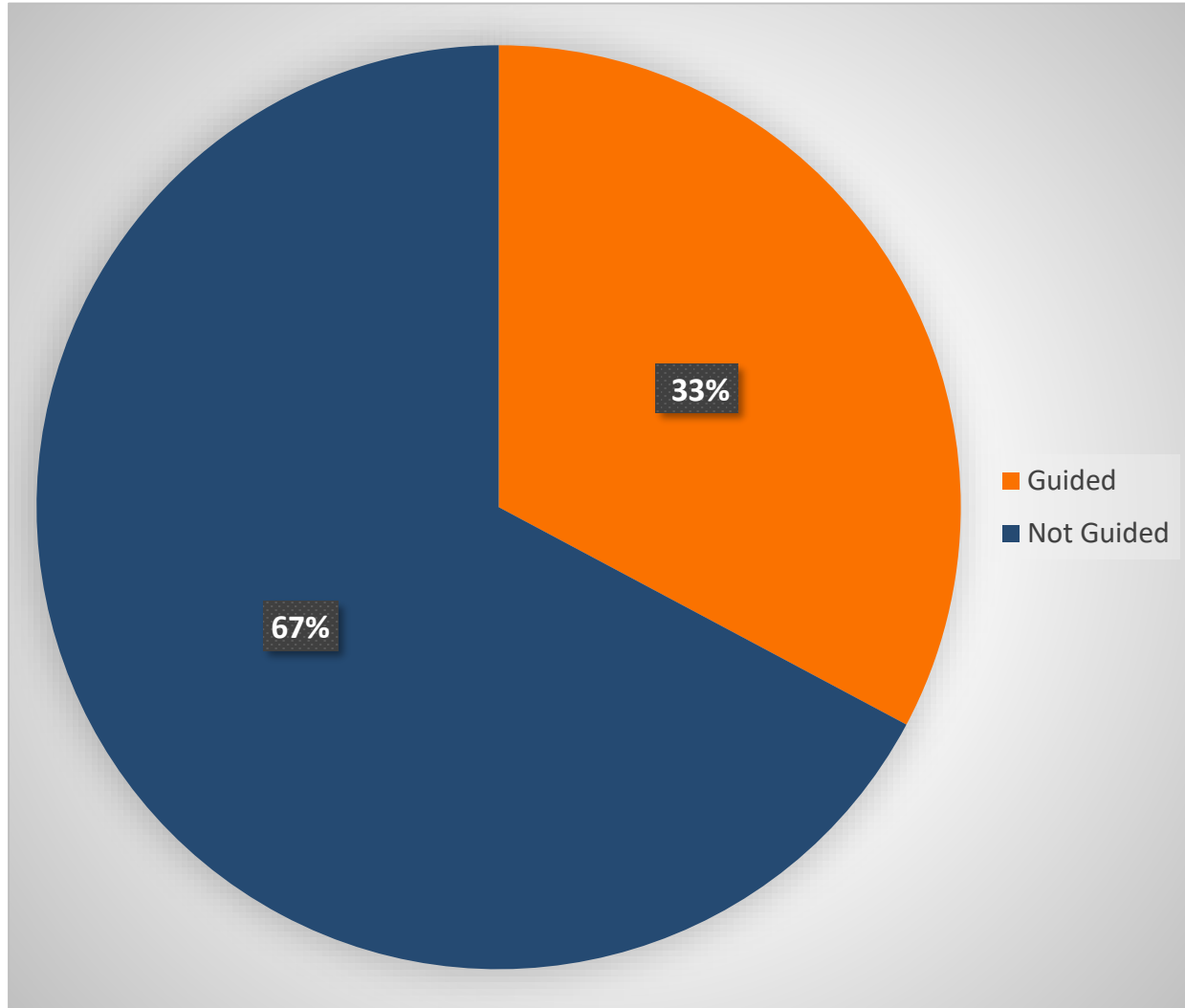


Nationally 21.5% of anglers are fishing from out of state

**Values for national comparison were taken from the USFWS 2016 National Survey of Fishing, Hunting, and Wildlife-Associated Recreation

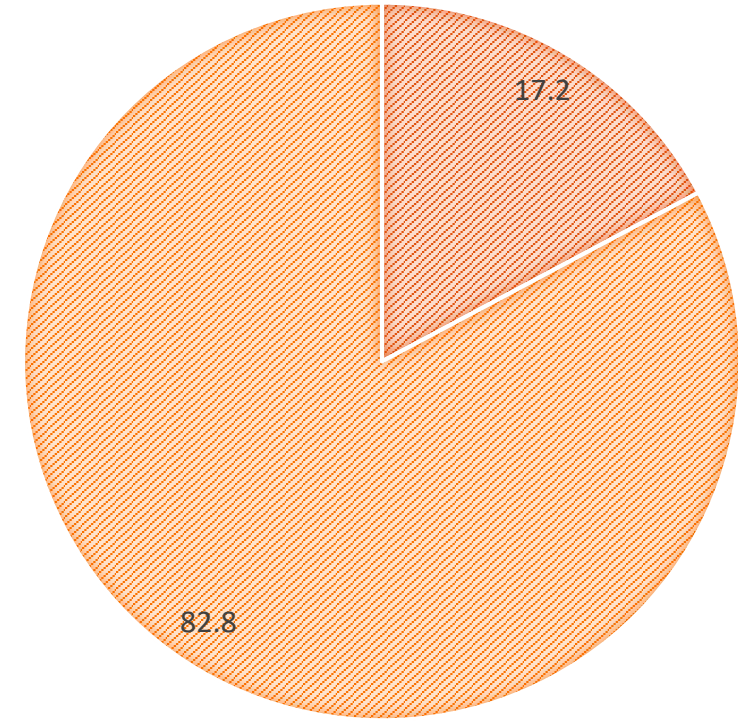
- 45 states (in addition to UT) & 5 countries were represented
 - CA was the most represented state
 - Hawaii, Iowa, Nebraska, Rhode Island, and South Dakota were not represented
 - International Countries included: Canada, Australia, England, Japan, and Spain

GUIDED FISHING



GUIDED TRIPS

Resident NonResident



Q2. HOW SATISFIED ARE YOU WITH YOUR TYPICAL FISHING EXPERIENCE HERE ON THE MPR? (I.E., THE NUMBER, SIZE, SPECIES, ACCESS)

Answered: 2,476 Skipped: 76

Choice	# of Responses	% of Responses
Very Satisfied	520	21
Satisfied	940	38
Neither	201	8
Dissatisfied	15	0.6
Very Dissatisfied	2	0.08
No Opinion	798	32

Q3. WHAT CAN UDWR DO TO INCREASE YOUR LEVEL OF SATISFACTION WHILE FISHING HERE ON THE MPR?

Comment	#	%
Reduce crowding	74	18.5
No changes/Happy/Satisfied	55	13.8
Bigger fish	53	13.3
Access maintenance or improvement	41	10.3
Less fishing guides	24	6
Increase access	22	5.5
Remove trash	19	4.8
Regulate fishing guides	14	3.5
Bait above Legacy Bridge	12	3
Angler education (conservation, ethics, etiquette, flow data)	12	3
More harvest/Increase harvest	10	2.5
Increased LE	9	2.3
Too many fish	7	1.8
Road maintenance	6	1.5
More fish	4	1
Increased access for handicap/elderly	3	0.8

399 anglers commented, 15.6% of individual, interviewed anglers

No development	2
Require barbless hooks	2
Higher catch rates	2
Keep flows lowered	2
Remove/reduce size restriction above Legacy Bridge	2
Make it all general regs	2
Stock 16" RBT	2
Raise flows	2
One day license	2
Alternate guide days	1
Map at all access points	1
DNR needs to kill fish	1
Help local anglers	1
Manage flows for hatch	1
More catch & release	1
Remove beavers	1
Free fishing licenses for veterans	1
Improve tributaries	1
More Mountain Whitefish	1
River was better before restoration	1
More fishing holes	1
Season on the river	1
Stock BCT	1
Regulate flows	1
Stop landowners from cutting trees near the river	1

Q4. HOW SATISFIED ARE YOU WITH THE CURRENT FISHING REGULATIONS ON THE MPR?

- Answered: 2,469 Skipped: 83

Choice	# of Responses	% of Responses
Very Satisfied	330	13
Satisfied	769	31
Neither	463	19
Dissatisfied	17	0.7
Very Dissatisfied	2	0.08
No Opinion	888	36

Q4B. WHAT COULD UDWR DO WITH FISHING REGULATIONS ON MPR TO INCREASE YOUR LEVEL OF SATISFACTION?

- 177 anglers (7%) commented – 156 comments were related to regulations

Comments	#	%
No changes	69	44.2
Increase the limit or Limit 4 fish entire MPR	33	21.2
Don't know (or care) about regulations	12	7.7
Allow harvest of larger fish	11	7.1
Artificial only on entire MPR	9	5.8
Allow bait on entire MPR	8	4.5
Barbless hooks	5	3.2
Catch & Release only	5	3.2
Regulate guides	2	1.3
More LE	2	1.3
More regulations on the river	1	0.6

CONCLUSIONS

- Brown Trout population is 2,000-3,500 individuals >6"/mile or 1,800lbs/mile
- Condition, based on W_r and Fulton's K , indicate a healthy population
- Trophy populations of Brown Trout and Mountain Whitefish observed
 - Currently the Middle Provo is designated as a Blue Ribbon Fishery
 - Would be considered a Trophy and Blue Ribbon Fishery based on Idaho (PSD-M = 5, PSD-T = 2) and Wyoming (>600lbs/mile) standards, respectively

CONCLUSIONS

- <1% of interviewed anglers are dissatisfied with MPR fishing
- <1% were dissatisfied with MPR fishing regulations
- Most common comments recorded were regarding overcrowding on the river followed by “no changes”
- Overall, there is a healthy sportfish population including trophy opportunities and anglers are satisfied with Middle Provo River fishing opportunities

THANK YOU



Utah Division of
Wildlife Resources

