



- **WEBER RIVER**

STREAMERS -

Derick Roskelley
“Skelly”

PRESENTATION ON THE LOWER WEBER

01

LOWER WEBER RIVER

Discussing the overlooked, Lower Weber.

02

MONTHS / FLOWS

Understanding Flows / Diversions

03

NYMPHING

Nymphing Setups / Some Go To Flies / Weight

04

DRIES

Not a great dry fly river (IMO), but let's talk about it.

05

STREAMER FISHING

My baby, that consistently produces lots of big fish.

06

Q AND A

Open to any questions.

01

LOWER WEBER

Hundreds of anglers drive past the whole Lower Weber to get to the Middle Weber or Provo and I have no problem with that!

Henefer to
Riverdale City is where I
spend 80% + of my time
on the Weber River.

USGS Stream Gauges I Use:

- Echo
- Lost Creek
- Morgan
- East Canyon Creek
- Mt. Green
- Uintah / South Weber



Continuous data

Lost Creek Near Croydon, Utah - 10132500

[Subscribe to WaterAlert](#)

April 30, 2025 - May 7, 2025

Discharge, cubic feet per second

11.4 ft³/s - May 07, 2025 02:45:00 PM MDT



IMPORTANT

Data may be [provisional](#)

[Show legend](#) ▾

Questions or Comments



waterdata.usgs.gov



Continuous data

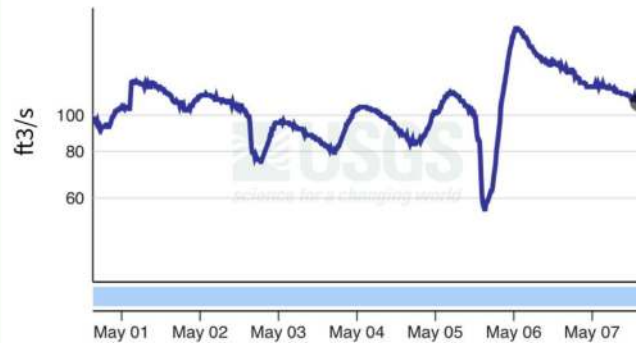
Lost Creek at Devils Slide, Utah - 10133000

[Subscribe to WaterAlert](#)

April 30, 2025 - May 7, 2025

Discharge, cubic feet per second

108 ft³/s - May 07, 2025 02:15:00 PM MDT



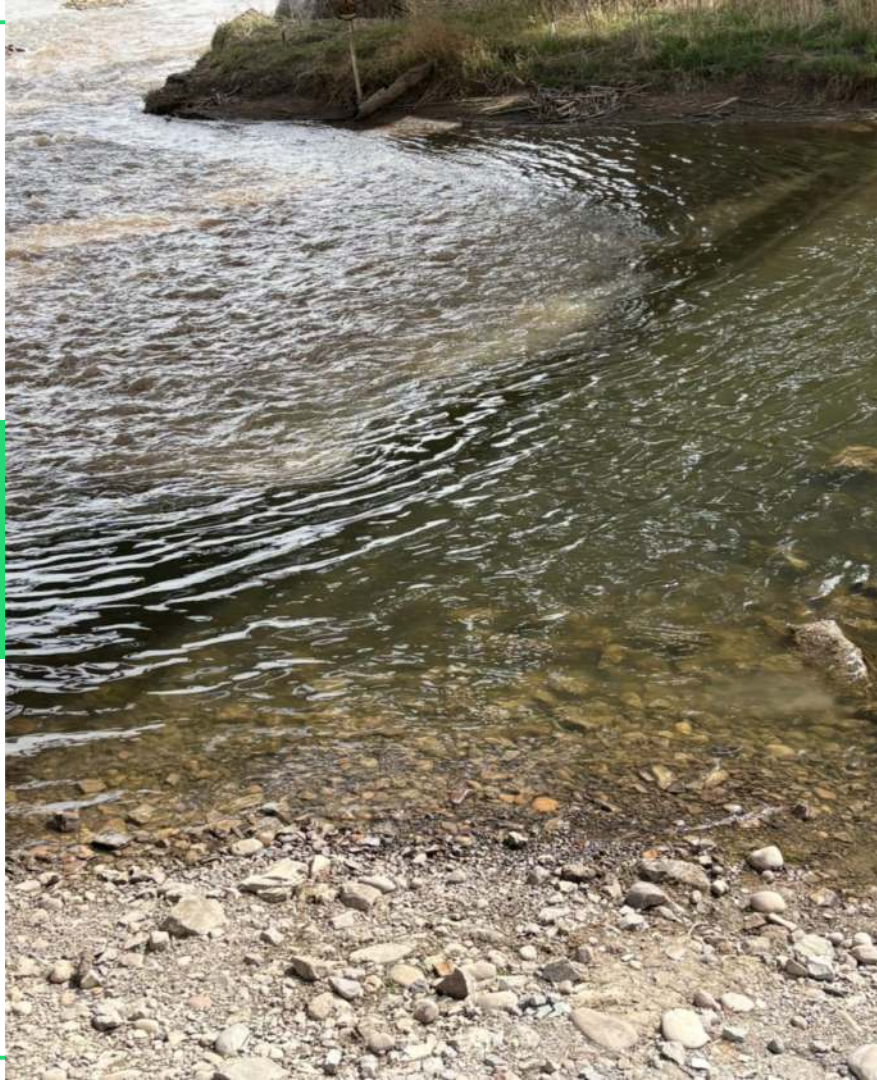
IMPORTANT

Data may be [provisional](#)

[Show legend](#) ▾

[Show graph details](#) ▾

Questions or Comments



Scale

Linear

Log

Continuous data

**Weber River at I-84 at Uintah, UT -
10136600**

[Subscribe to WaterAlert](#)

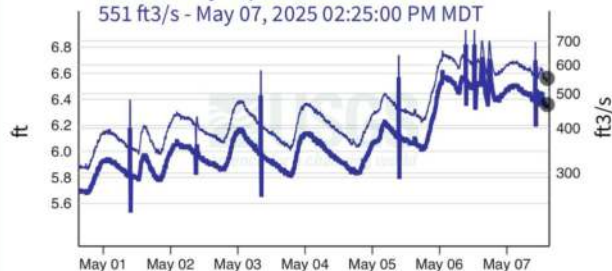
April 30, 2025 - May 7, 2025

Gage height, feet

Discharge, cubic feet per second

6.36 ft - May 07, 2025 02:25:00 PM MDT

551 ft³/s - May 07, 2025 02:25:00 PM MDT



IMPORTANT

Data may be [provisional](#)

Show legend ▾

Questions or Comments

LOWER WEBER FLOWS



LOWER WEBER FLOWS



MONTHS / FLOWS - 75 CFS - 275 CFS IS PRIME

01

JANUARY / FEBRUARY

0.5 CFS

02

MARCH / APRIL

Prime as runoff / releases
start hitting!
1-3 CFS + Runoff and
Other Releases

03

MAY / JUNE

May - Varies 202 CFS
Today
June - 550+ CFS

04

JULY / AUGUST

550+ CFS

05

SEPTEMBER / OCTOBER

Prime as flows start
coming down. October
15th ish shut off to 0.5
CFS

06

NOVEMBER / DECEMBER

0.5 CFS

NYMPHING



4 WT / 5 WTS

Obviously, whatever rods you like.



LONG LEADERS

I fish longer leaders under an indicator to get down quick.



THREE (3) FLY RIGS

Double inline rig with tag above the weight



WEIGHT!!!!

Especially in bigger summer flows, I fish very aggressively with weight.

GO TO SPRING NYMPH PATTERNS



#16s
#18s
#20s

GO TO SUMMER NYMPH PATTERNS

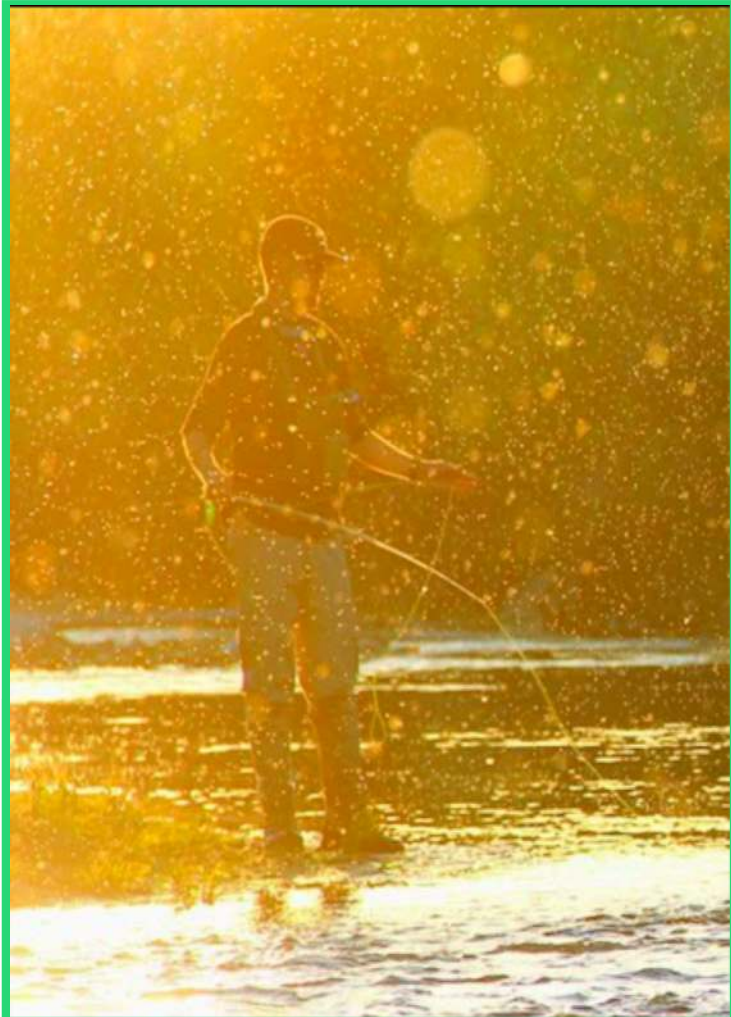


#12s
#14s
#16s

GO TO FALL NYMPH PATTERNS



#16s
#18s
#20s



EARLY SPRING

BWO's Best hatch to see fish rising at dries for me.

LATE SPRING / SUMMER

Caddis fishing can be productive late especially around lights

TERRESTRIALS

I have the most luck with ants and hoppers.

DRY FLY FISHING.

Spotty at best when it comes to good hatches. Every year I see epic hatches with no to hardly any fish looking up at it. I do best fishing ants / hoppers in lower flow sections with nothing going on.



02

STREAMERS

My preferred method anywhere I fish. I love nymphing and dry fly fishing, but I am addicted to this.





REASONS I LOVE STREAMER FISHING.

- VISUAL
- AGGRESSIVE EATS
- MISSES ARE FUN
- QUALITY OF FISH
- ACTIVE
- HIGH RISK / HIGH REWARD

STREAMER FISHING



6 WT / 7 WTS

Obviously,
whatever rods
you like.



FULL SINK LINES

150 Grain - 300
Grain Sinking
Lines



SHORTS STOUT MAXIMA LEADERS

12 - 18 Inches of
20lb Mono.
18 - 24 Inches
of 12 lb Mono.



FISH FAST

Cover as much
water as
efficiently as
possible.

STREAMER FISHING



VARY RETRIEVES

Fast / Slow /
Jerk Strips /
Stalls. If it is
moving, they
will eat it.



POSITIONING

I often square my
shoulders to the
bank I'm fishing, rod
upstream to slow
things down.



COLOR / FLY CHANGES

If I fish 3-4 fishy
stretches and
don't move a
fish, I change.



MIND SET

Leave your
nymph and dry
stuff at home.



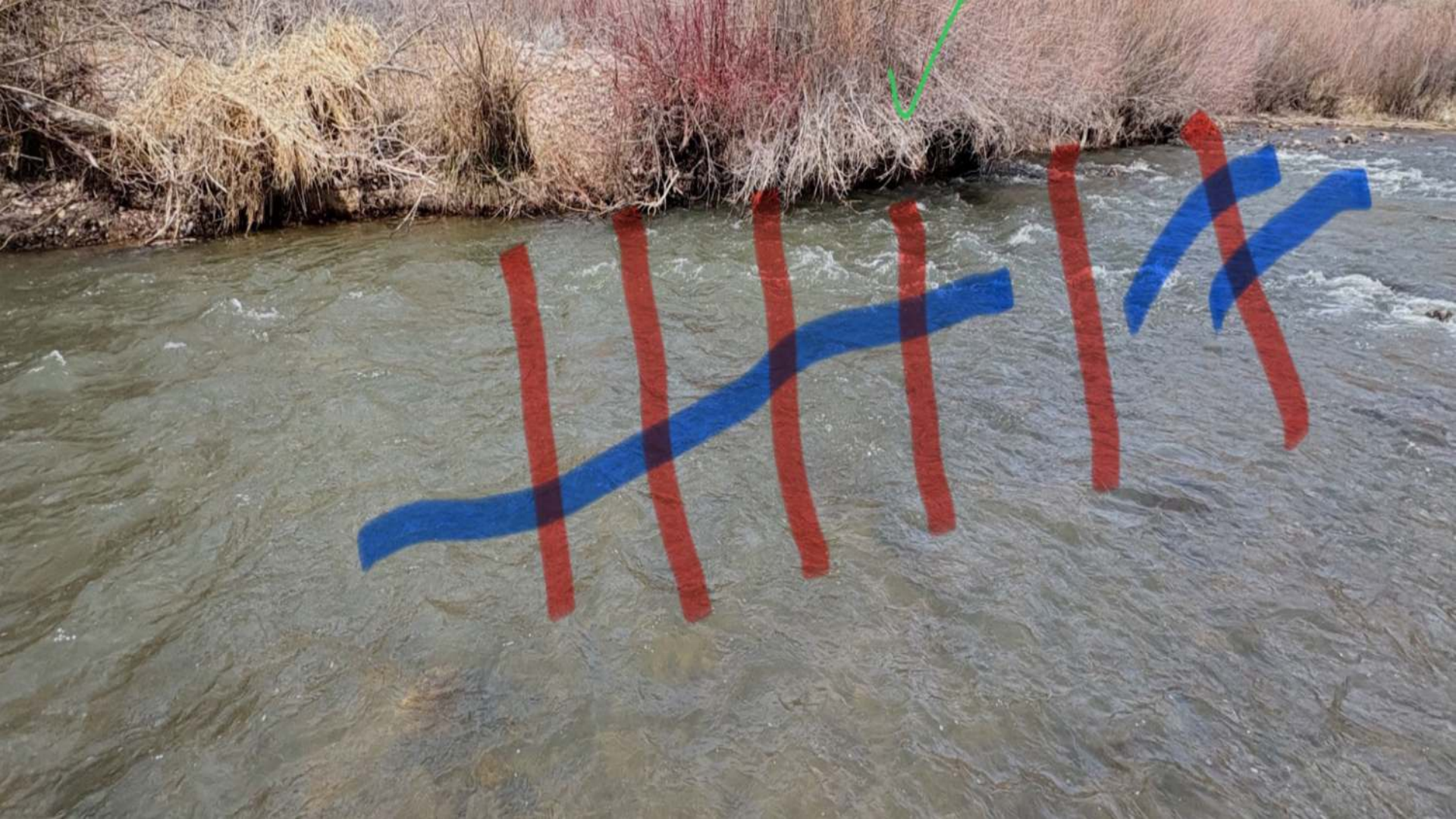
**DISSECTING WATER
AT A FAST FISHING
PACE.**

GAME TIME:



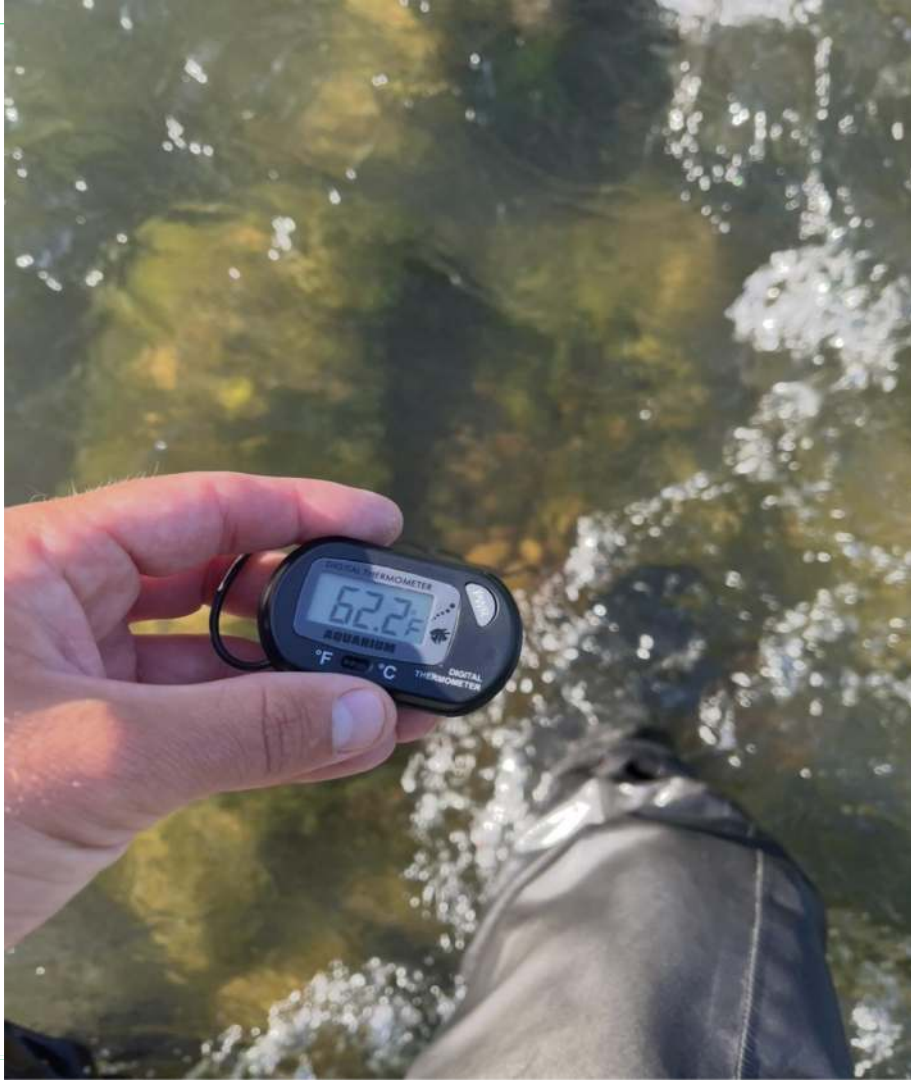








**EASY TO PACK LIGHT FOR
WADE FISHING.**



**AUGUST 5TH,
LOWER FLOWS
WHERE EVERYONE
THINKS FLOWS ARE
TOO LOW TO FISH**



THANK YOU